



# CAT Radius Server Quick Reference

January 2011

## General

The CAT mini Radius Authentication is a Windows Radius Server application developed specially for the CAT Authentication Server (CAT AS).

The intention is to provide this version with the following update versions of the CAT AS.

It currently provides:

- Support for PAP protocol authentication queries.
- Multiple Clients definitions
- Debug and Normal running modes
- Logging to a text log file

## Requirements

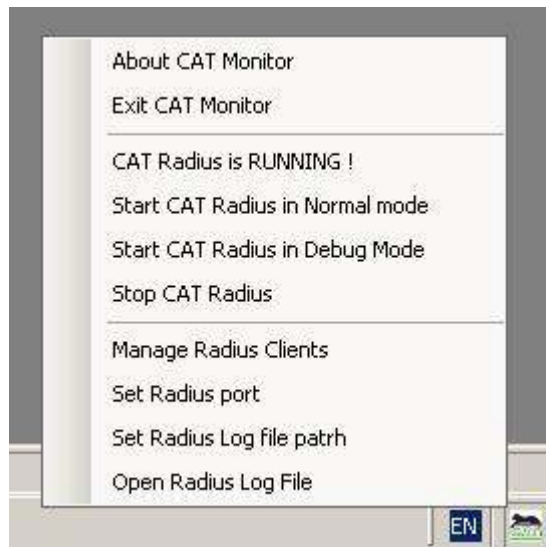
- CAT Authentication Server has to be installed and running on the same server.
- We recommend the usage of an SQL database like MS SQL Server or MySQL.
- MS Framework 3.5 may be required during the installation.

## Installation Step by Step

- If the CAT AS is already installed with Radius and Monitor at your location:
  - Disable the Radius provided with the installation of CAT AS. You can use the CAT Monitor to close it or the Services option from the Windows Administrator Tools.
  - Close the CAT Monitor. There will be a new monitor with the CAT mini Radius installation.
- If this is going to be a new CAT AS installation, then make the installation without Radius and Monitor. (Do not check these options during the installation of the CAT AS).
- Run the Setup.exe and follow the instructions to complete the installation. The installation will create a folder at: c:\Program Files\Mega AS Consulting Ltd. It also creates a Windows Service called: CAT Radius Authorization Service, and installs a new CAT Radius Monitor application.
- Open your database and add a new table called: clients. You can find SQL Scripts to define the table in MS SQL Server or MySQL databases, at the SQL Scripts sub folder.
- Double click on the CAT Radius Monitor desktop Icon. This will add the new CAT Monitor icon to the System Tray area (like the previous monitor).
- You are now ready to enter the CAT Radius Settings.

## Radius Setting:

Click on the Monitor with your Right Mouse Button:



- **Select Manage Radius Clients.** If the clients table was created during the installation, you will get an Empty table. Use the Client IP and Shared Secret fields to enter the client details and press Add. You can add as many clients as you need.

Notice – The CAT Monitor is looking for the installed CAT AS. It identifies the DSN used by the CAT AS and uses it to update the clients table.

- **Select the Set Radius Port.** The default port is 1812. Save your port and exit.
- **Select Set Radius Log File path** to enter a file name for the log. If there is no file name – the Radius log will not be accumulated.

Notice – The Radius Log is used mainly for Radius debug. All Radius queries are logged into the CAT AS log files and can be viewed by the administrator.

You are now ready to start the CAT mini Radius Service.



## Operating the Radius

- **Select Start CAT Radius in Debug Mode** for Radius testing and quick debugging. The option will open a Console window and will report all the Radius settings and Radius authentication queries. Using the Debug mode you can verify that your clients details are correct, that the CAT Radius recognizes the clients and the detailed reasons for rejecting access.

To stop the Console, enter q in the console window.

- **Select Start Radius in Normal mode** to start the CAT Radius Windows Service. This service will start automatically each time the server starts.

Notice – The CAT mini Radius links directly to the installed CAT AS. When an authentication query arrives it is using the CAT AS API to make the authentication.

## Support

Please read the product License Agreement when installing the product. By completing the installation and using the product you agree to the LA terms.

For support, please contact: [support@megaas.com](mailto:support@megaas.com)